



4 Bexley High Street, Bexley, Kent
DA5 1AD

Tel: 01322 522111

Email: bexley@village-estates.com

www.village-estates.com



* TWO BEDROOMS * GATED ALLOCATED PARKING *

* SPACIOUS RECEPTION ROOM * GOOD SIZED BATHROOM *

* SEPARATE KITCHEN * OVER 950 YEAR LEASE *

* £1200 PER YEAR SERVICE CHARGE * CLOSE TO LOCAL AMENITIES *

VIEWING HIGHLY RECOMMENDED * CLOSE TO SCHOOLS AND MOTORWAY LINKS *



**Flat 28 Carey Court Gravel
Hill Close
Bexleyheath, DA6 7NT**

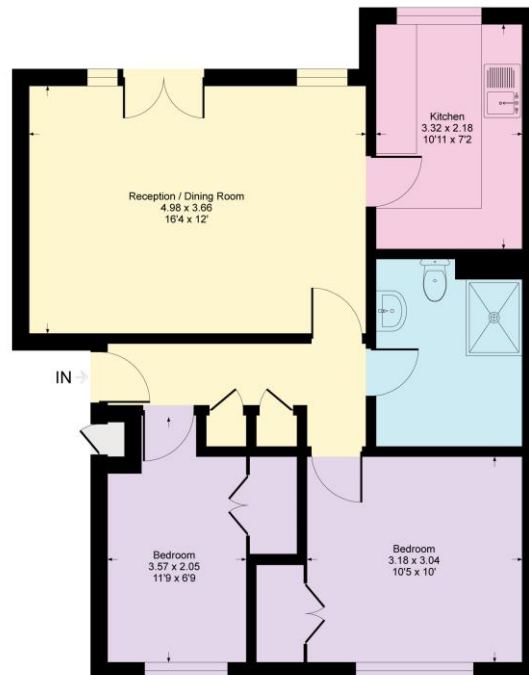
Guide Price £270,000

Village Estates are pleased to present to the market this spacious two bedroom first floor apartment situated in a popular location offering a long lease of over 950 years. Positioned within easy reach of local schools, shops and motorway connections and offering gated parking and communal gardens. Viewing comes highly recommended....



EPC RATING C
957 YEAR LEASE REMAINING
£1200 P/A SERVICE CHARGE

Gravel Hill Close, DA6
Approximate Gross Internal Area = 57 sq m / 624 sq ft



First Floor

This plan is for layout guidance only. Not drawn to scale unless stated. Windows and door openings are approximate. Whilst every care is taken in the preparation of this plan, please check all dimensions, shapes and compass bearings before making any decisions reliant upon them.
Produced by Planex

We understand this property is Leasehold.

VIEWING:

Via **Village Estates** on 01322 522111
Monday to Friday 9am-6pm, Saturday 9am-5pm
SELLING YOUR HOME?

If you are thinking of selling your own property, **VILLAGE ESTATES** will be pleased to provide you with a free market appraisal for sale purposes and professional marketing advice **FREE OF CHARGE, WITHOUT OBLIGATION**. Call one of our experienced sales staff on 01322 522111.

Whilst we endeavour to make our sales details reliable and accurate they should not be relied on as representations or statements of fact, and do not form any part of an offer or contract. The Seller does not make or give nor do we or our employees have authority to make or give any representation or warranty in relation to the property. We would strongly recommend that all the information which we provide about the property is verified by yourself on inspection and also by your conveyancer, especially where statements have been made by us to the effect that the information provided has not been verified. If there are any other points which are of particular importance to you, we would be only too happy to check the information and indeed confirm the availability of the property. Please contact the above office to arrange a convenient viewing appointment.